

## PRODUCT: AIKO WALL BASIN/BATH

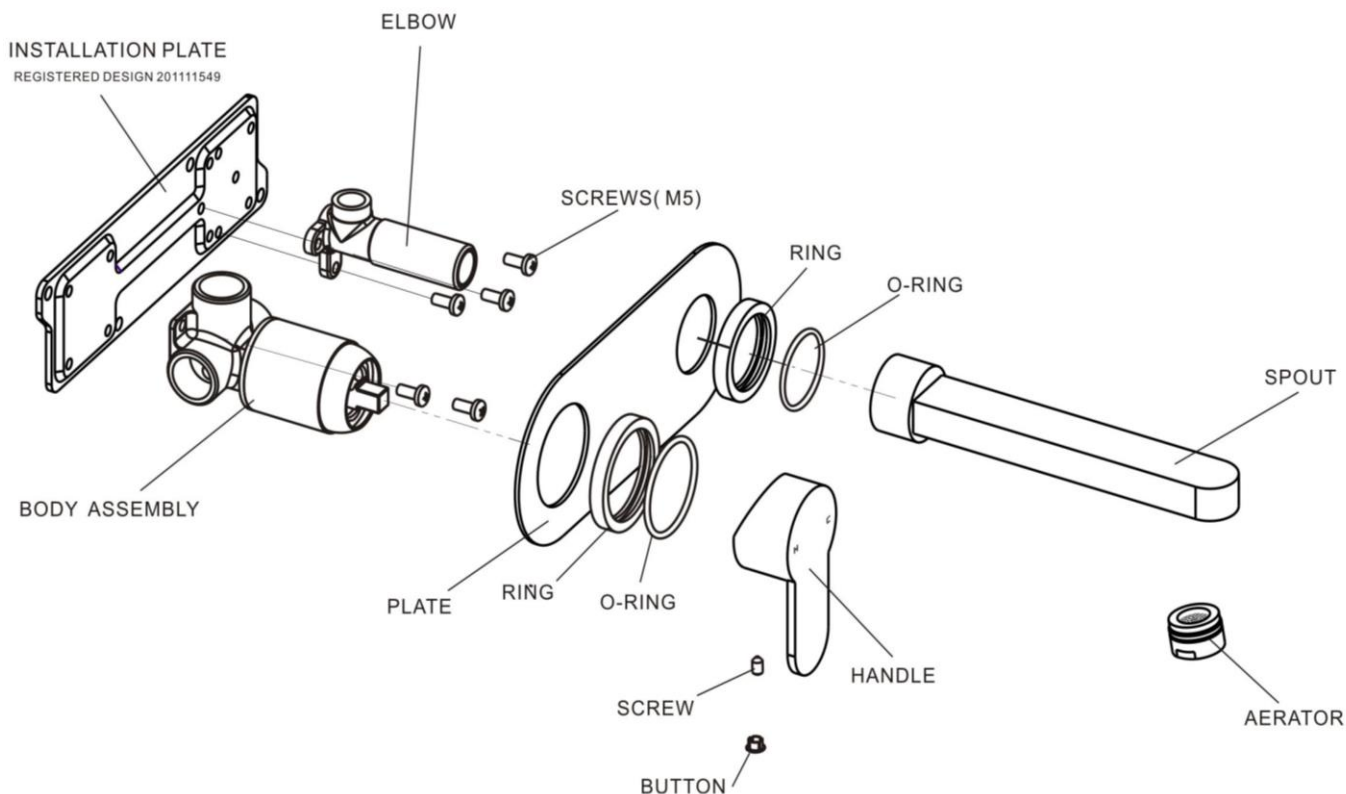


FIGURE # 1  
EXPLODED ASSEMBLY

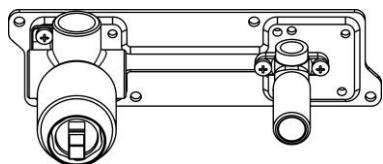


FIGURE # 2  
AS SUPPLIED  
LEFT HAND  
MIXER OPTION

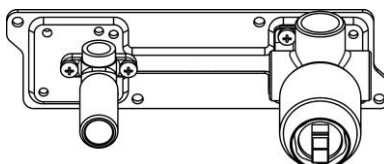


FIGURE # 3  
RIGHT HAND  
MIXER OPTION

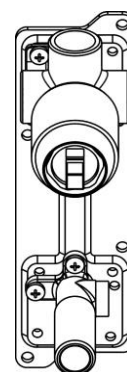


FIGURE # 4  
VERTICAL TOP  
MIXER OPTION

For all servicing needs, please contact CUSTOMER SERVICE on:  
 FREECALL: 1800 800 919    PHONE: 08 93094688    FAX: 08 9409 6589    EMAIL: [customer.service@aldertapware.com.au](mailto:customer.service@aldertapware.com.au)

## INSTALLATION: AIKO WALL BASIN/BATH

1. FIGURE # 2 AS SUPPLIED - BASIN / BATH SET is factory assembled in the LEFT HAND MIXER operation on the INSTALLATION PLATE (Registered Design – 201111549)
2. FIGURE # 3 – Reassemble components for RIGHT HAND MIXER operation
3. For a double vanity, it is recommended that a LEFT HAND set be installed on the left and a RIGHT HAND set be installed on the right
4. FIGURE # 4 – reassemble components for a VERTICAL TOP MIXER operation
5. Flush out all pipe work before installation of the mixer
6. MIXER & ELBOW must be square to the wall /tile face
7. Note the markings on the MIXER plastic protective cover indicate where the final tile face must be

## AFTER TILING

Remove the plastic protective cover from the mixer body.

1. Make sure the back of the rectangular plate is clean and free of grease.
2. Apply water resistant silicone adhesive to the top and sides of the rectangular wall plate.
3. Fit the oval back plate to the tiled surface so that the plate is square and secure.
4. Fit slip ring to spout
5. Screw spout onto elbow using plumbers' tape as a sealant
6. Push slip ring up to the back plate
7. Fit the large retaining ring over the mixer and push up to the back plate.
8. Fit handle.

## WARRANTY

1. Warranty claims must be accompanied by the invoice showing dates of purchase or installation. Where a product has not been installed, the product can be returned with proof of purchase, to the place of purchase.
2. This warranty may become void due to the following:-
  - Inability to provide proof of purchase
  - Products not installed by a licensed plumber
  - Products not installed in accordance with installation instructions
  - Products exposed to pressures that exceed 500 Kpa and or temperatures that exceed 75°C within a building – Refer AS/NZS 3500.1:2003 (Clause 3.34)
  - Damage to ceramic disc cartridges from foreign matter e.g. sand, dirt, stones, thread tape, pieces of copper or plastic tubing etc.
  - Inadequate flushing of system prior to usage, causing damage and/or obstructions to the product
  - Damage to product surface due to installation (including adhesives and sealants) or post-installation
  - Failure to install flow regulators and check valves from outlets including showers, sink and vegie mixers
  - Products not used for its intended purpose
  - Products fitted with other devices to the outlet e.g. water filters
  - Failure to observe care and cleaning instructions, including failure to regularly clean aerator inserts in taps and or shower heads



35mm Cartridge

